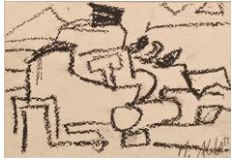


LG  
LINCOLN GLENN



**Mary Abbott**  
*Flowers*, circa 1950  
Signed lower left  
Pastel on paper  
30 x 22 1/4 inches



**Mary Abbott**  
*Postcard Geometry*  
Signed lower right  
Crayon on paper  
4 x 5 1/2 inches



**Mary Abbott**  
Untitled, circa 1953  
Signed with initials lower right  
Oil and torn paper collage  
17 x 14 1/2 inches



**March Avery**  
*Taking in the Nets*, 1967  
Signed, titled and dated on the stretcher  
Oil on canvas  
16 x 22 inches



**Sally Michel Avery**  
*Bucolic Landscape with Cows*, 1963  
Signed and dated lower left  
Oil on canvasboard  
9 x 12 inches



**Alice Baber**  
*Across the Wide, Tokyo*, 1964  
Signed lower right; signed, titled, and dated on the reverse  
Watercolor and leaf collage on paperboard  
10 1/2 x 9 1/2 inches

[www.lincolnglenn.com](http://www.lincolnglenn.com)

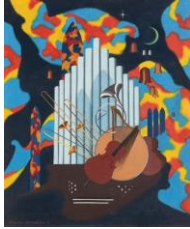
542 West 24<sup>th</sup> Street | New York, New York | [galler@lincolnglenn.com](mailto:galler@lincolnglenn.com) | (646) 764-9065



**Hannelore Baron**  
*Untitled (C82-142), 1982*  
Signed and dated on the reverse  
Mixed media collage  
Sheet 12 1/4 x 10 1/2 inches



**Mary Bauermeister**  
*Untitled, 1960*  
Signed and dated on the reverse  
Papier-mâché pressboard relief  
10 x 10 x 3 1/2 inches



**Virginia Berresford**  
*Baroque Music, 1947*  
Signed and dated lower left  
Oil on canvas  
24 x 20 inches



**Nell Blaine**  
*Tree at the Edge of the Field, Springs, 1967*  
Signed and dated lower left  
Watercolor on paper  
14 1/2 x 20 inches



**Lynne Drexler**  
*Raked Off, 1989*  
Signed, titled and dated on the reverse  
Oil on canvas  
36 x 31 inches



**Lynne Drexler**  
*Twilight Imagery, 1976*  
Signed and dated on the reverse  
Oil on canvas  
30 1/2 x 22 1/2 inches

LG  
LINCOLN GLENN



**Perle Fine**  
Untitled, circa 1952  
Signed lower right  
Ink on paper  
18 x 24 inches



**Perle Fine**  
Untitled, circa 1952  
Signed lower left  
Newspaper and gouache collage on paper  
10 1/2 x 8 1/2 inches



**Sherron Francis**  
*Pete's Neck*, 1981  
Signed, titled and dated on the reverse  
Acrylic on canvas  
34 1/2 x 22 inches



**Sherron Francis**  
*Untitled A-2*, 1975  
Signed, dated and titled on the reverse  
Acrylic on canvas  
12 1/2 x 16 inches



**Suzan Frecon**  
*Matrona*, circa 1998  
Watercolor on Indian paper  
14 x 18 inches



**Shirley Goldfarb**  
*Untitled (7)*, 1963  
Initialed lower right; signed, dated, and numbered on the reverse  
Oil on paper  
9 3/4 x 8 1/2 inches

# LG

LINCOLN GLENN



**Gertrude Greene**

*Byzantine*, 1955

Signed and dated lower right; signed titled and dated on verso

Oil on canvas

36 x 28 inches



**Juanita Guccione**

*Lesson from the Rose (Whither my Destiny)*, 1940s

Signed upper right

Oil on canvas

30 x 42 inches



**Grace Hartigan**

*Pompeian Perfumer*, 1999

Signed and dated lower right; signed, titled, and dated on the reverse

Oil on linen

72 x 66 inches



**Sheila Hicks**

*Tapisseries du Vent*, 1973

Signed on the reverse

Synthetic raffia weaving with Lucite rods

56" high x 34" wide x 6" deep

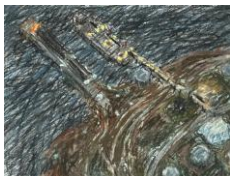


**Yvonne Jacquette**

*From World Trade Center: Mixed Heights*, 1997-98

Pastel on paper

30 x 22 inches



**Yvonne Jacquette**

*Searsport Harbor Night I*, 1982

Pastel on paper

8 1/4 x 11 inches

[www.lincolnglenn.com](http://www.lincolnglenn.com)

542 West 24<sup>th</sup> Street | New York, New York | [gallery@lincolnglenn.com](mailto:gallery@lincolnglenn.com) | (646) 764-9065



**Lila Katzen**

*Inside the Black Diamond*, 1964

Signed, titled, and dated on the reverse

Acrylic on canvas

30 x 24 inches



**Barbara Kruger**

*Untitled (FATE)*, 2001

Chromogenic dye coupler print, in artist's frame

85 x 49 inches

Edition of 10



**Diana Kurz**

*Window*, 1961

Oil on canvas

30 x 23 inches



**Blanche Lazzell**

*Halloween*, circa 1920-22

Batik

15 1/2 x 9 inches



**Yoko Matsumoto**

*Work 1*, 1965

Signed and dated lower left;; signed on reverse and inscribed extensively in Japanese

Oil on canvas

36 x 35 3/4 inches



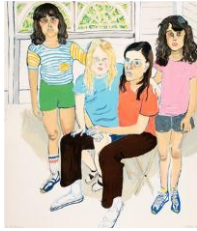
**Alice Neel**

*Alice by Alice (Self-portrait)*, circa 1932

Signed, dated and titled lower left

Graphite on paper

11 7/8 x 7 7/8 inches



**Alice Neel**

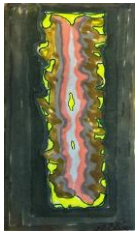
*The Family*, 1982

Signed and dated lower right and numbered "AP 20/25" lower left in pencil

Lithograph in colors on Arches paper

Sheet 31 1/2 x 27 inches

AP 20/25



**Betty Parsons**

Untitled, 1977

Signed and dated lower right

Watercolor and ink on paper

5 1/2 x 3 1/4 inches



**Betty Parsons**

Untitled, 1977

Signed and dated lower right

Gouache on paper

5 1/2 x 3 3/4 inches



**Betty Parsons**

Untitled, circa 1975

Painted wood

29 x 13 1/2 inches



**Agnes Pelton**

*Hayground Windmill, Bridgehampton*, circa 1920-22

Oil on canvas

20 x 25 inches



**Ethel Schwabacher**

*#191*, 1956

Initialed and dated upper left

Oil on paper

7 1/4 x 9 1/4 inches





**Vivian Springford**  
*Expansionist Series (VSF295)*, circa 1970  
Signed on the reverse  
Acrylic on canvas  
28 1/4 x 24 1/4 inches



**Marjorie Strider**  
*Overflow*, 2010  
Signed on verso  
Acrylic on canvas  
48 x 40 inches



**Takako Yamaguchi**  
*Untitled #9*, 1979  
Signed and dated on verso  
Oil, metal leaf on paper  
48 3/4 x 35 inches